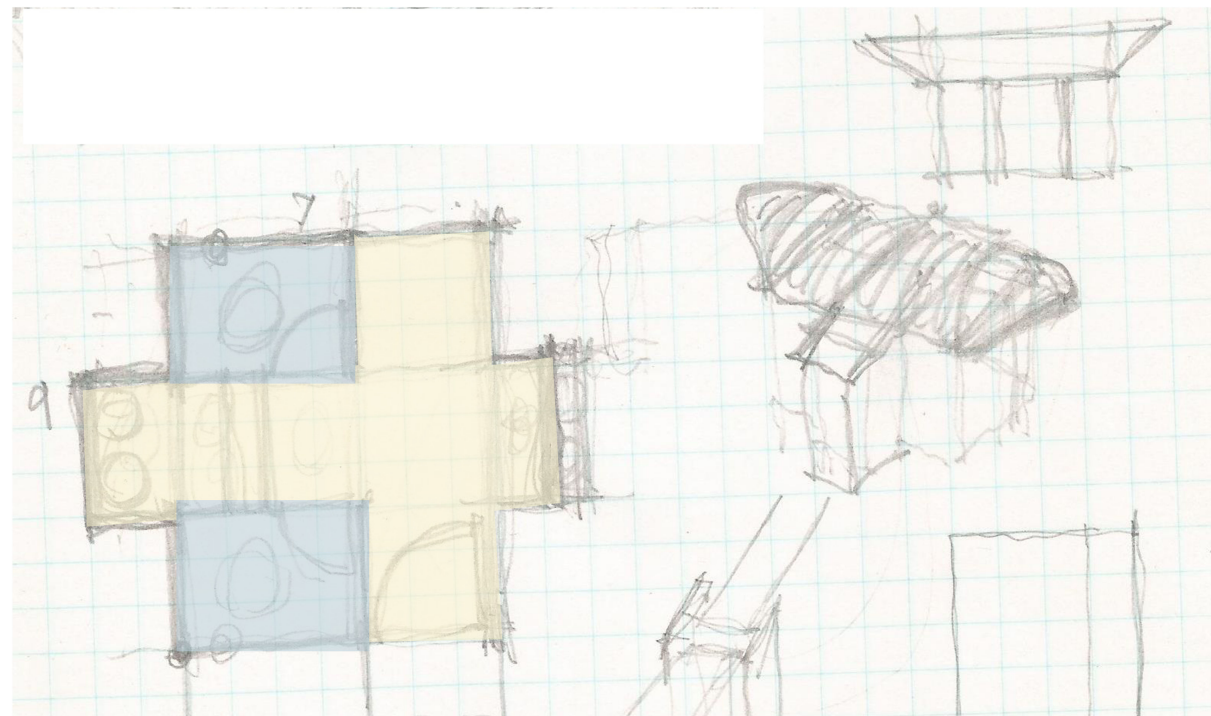
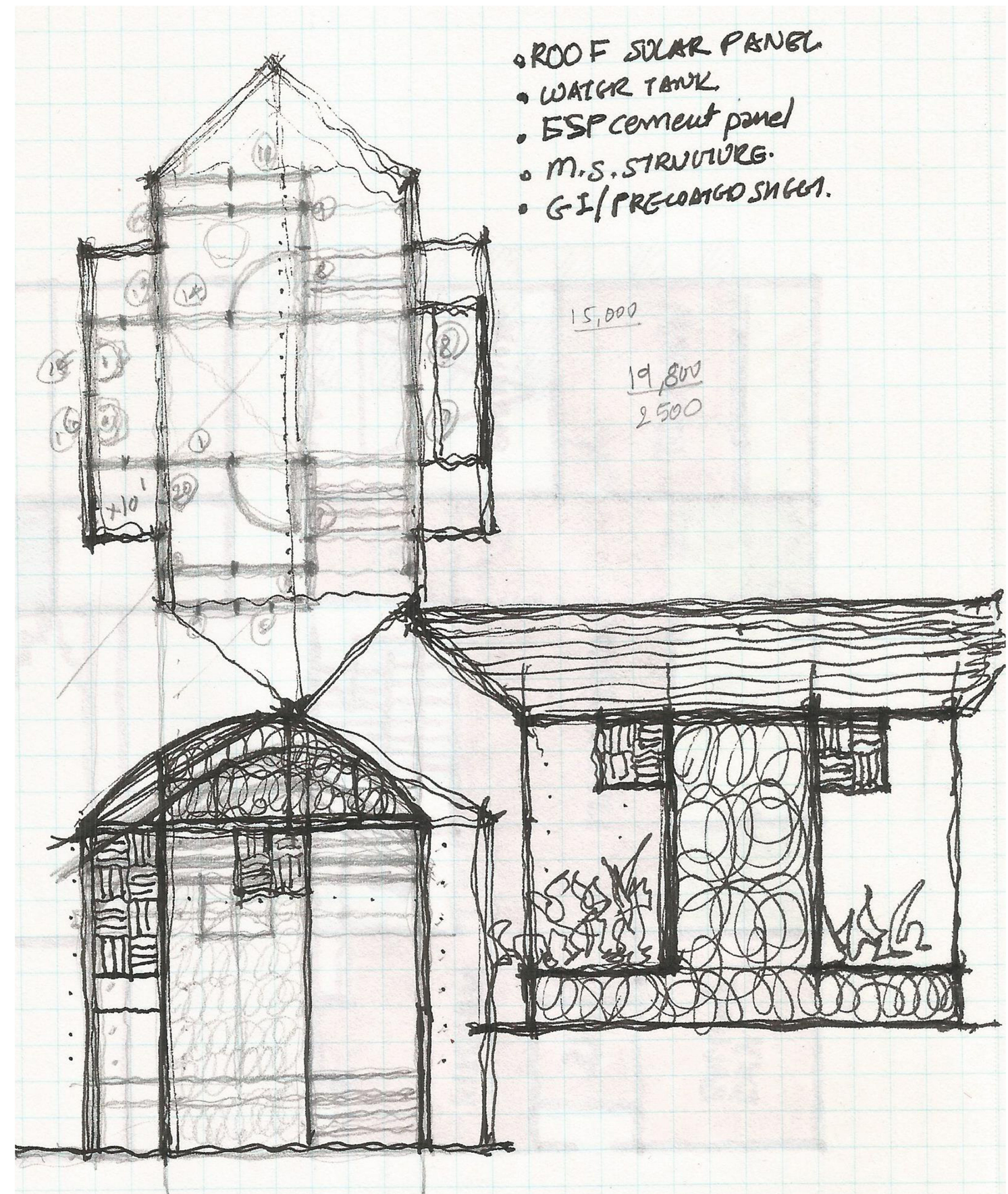


DEVELOPMENT 1 - STARTED WORKING WITH SINGLE MODULE  
ARRANGING BY CREATING COURTYARD.

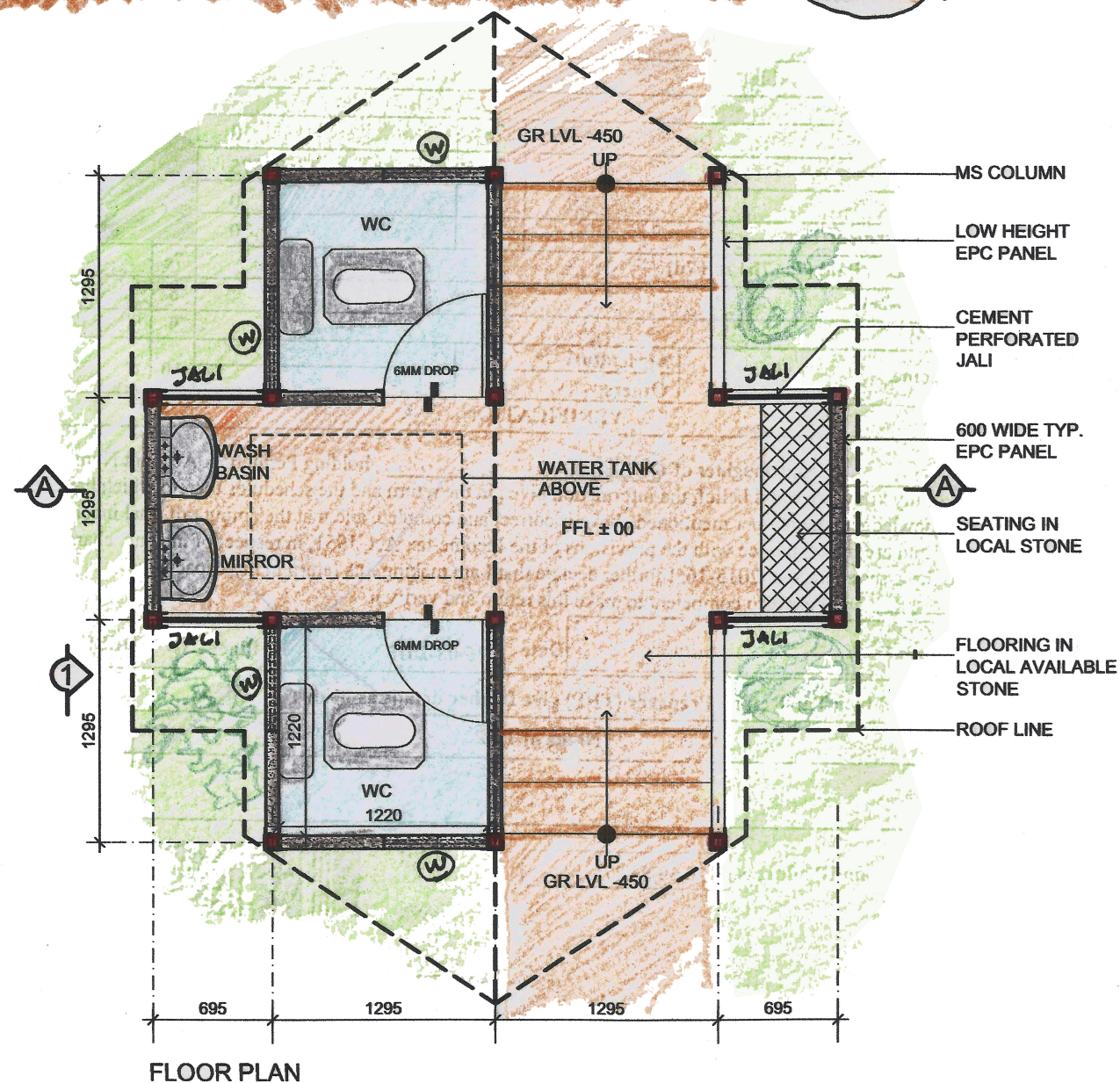
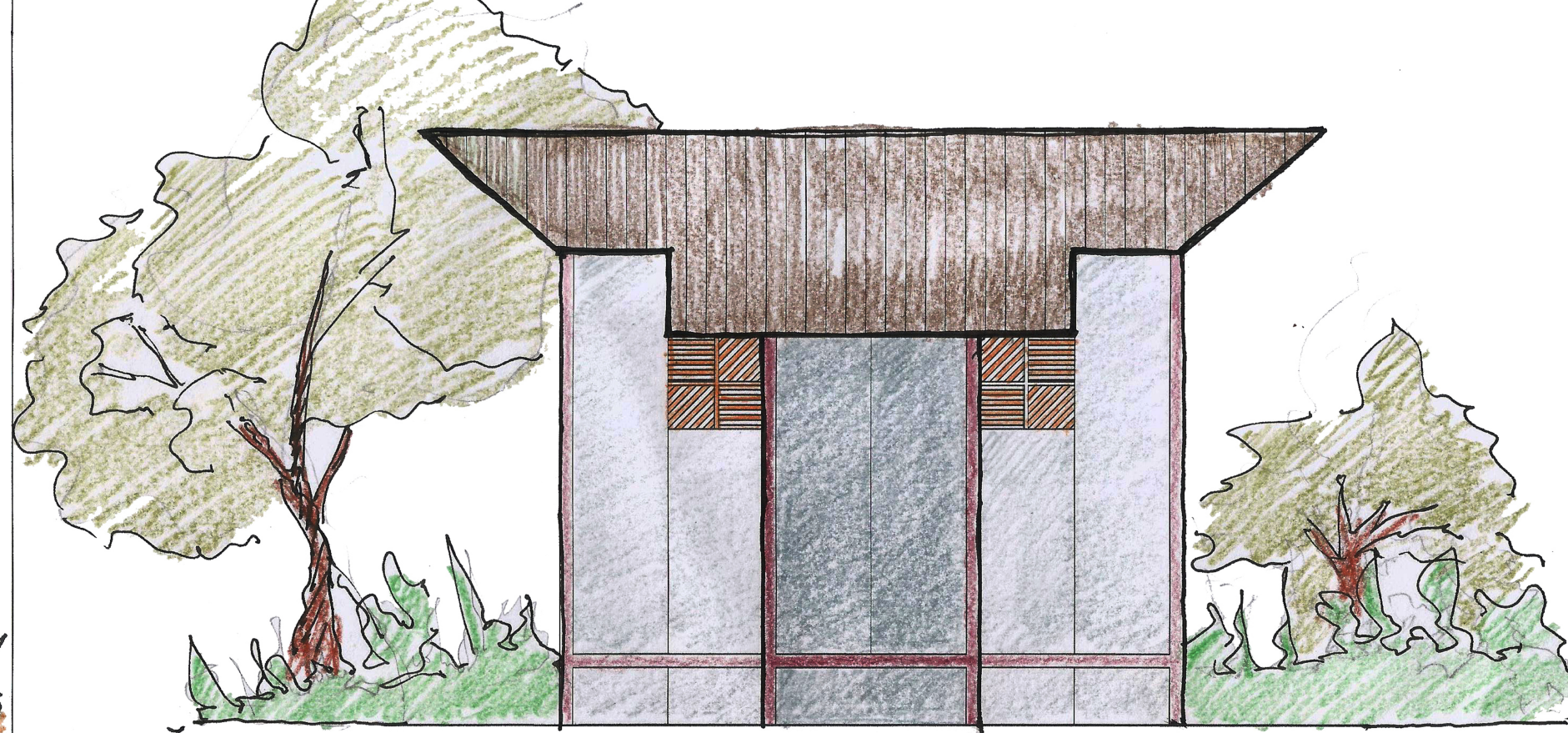
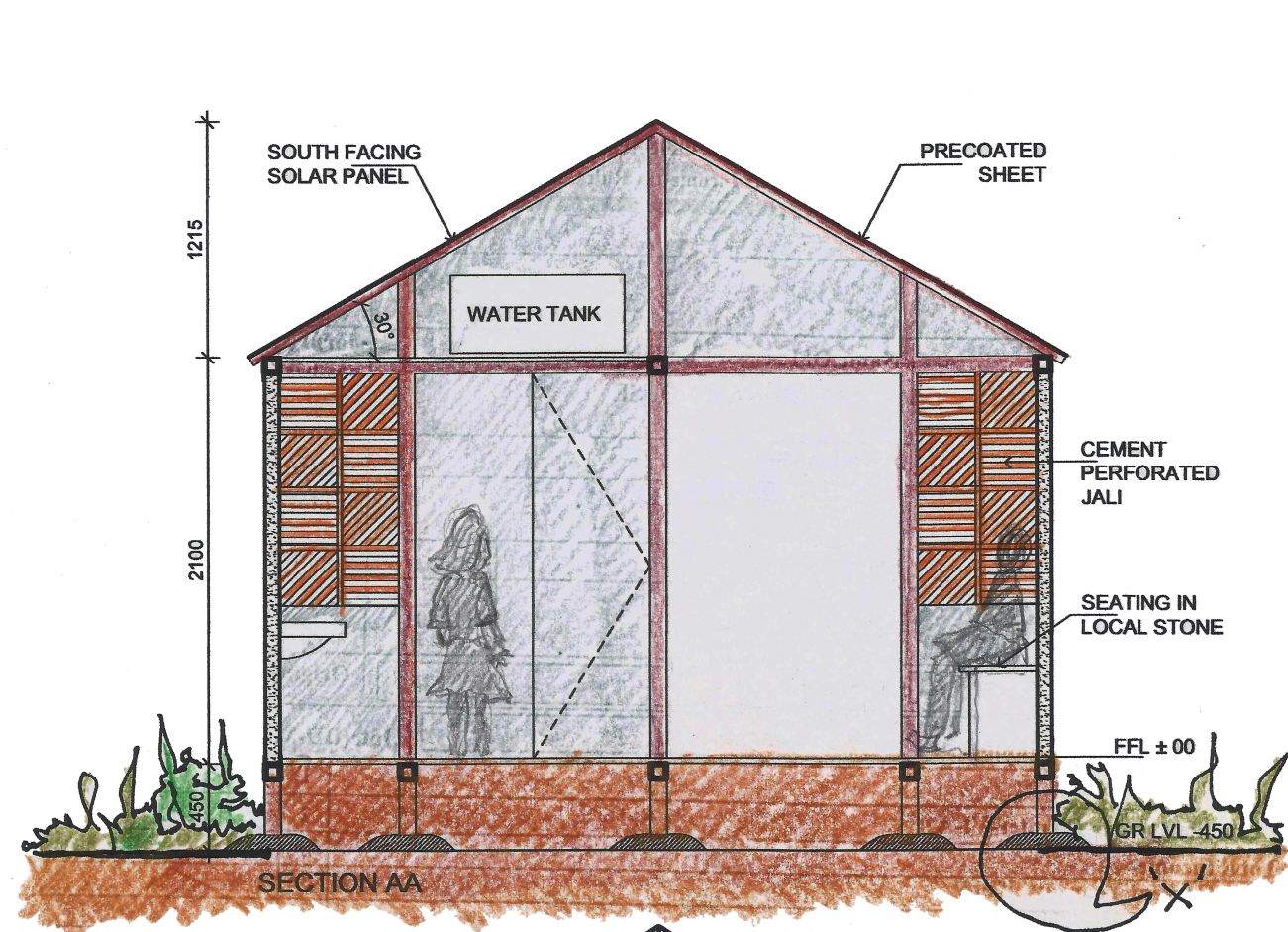


DEVELOPMENT 2 - SINCE SPACE REQUIREMENT IS MORE IN DEVELOPMENT  
STARTED TRYING A COPACT VERSION



FURTHER DETAILING IN DEVELOPMENT 2 & MATERIAL EXPLORATION . CAME TO A CONCLUSION ABOUT  
USING MATERIAL WHICH CAN BE EASY TO INSTALL, READLY AVAILBLE IN MARKET AND LESS WORK ON  
SITE WHILE INSTALLING





ISO VIEW



AMBALAMA - , SRILANKA.



DETAIL X

(PHOTO COURTESY  
architectutebrio  
instgarm account)

PLAN IS A SIMPLE ARRANGMENT OF TWO TOILETS WITH IN BETWEEN SPACE IS USED FOR WASH BASIN & SEATING.

PLAN IS COMPACT AND THIS MODULE CAN BE REPLICATED AS PER AVAILABLE SPACE. VARIOUS ARRANGMENTS CAN BE WORKED OUT BY USING THIS MODULE.

FOUNDATION IS INSPIRED FROM "AMBALAMA" WHERE STRUCURE IS BALANCED ON TWO FEET WIDE BOULDER. SINCE IT IS A LOW COST PROJECT BOULDERS ARE CONCEPTULIZED INSTEAD OF CONVENTIONAL FOUNDATION.

COLUMNS ARE IN MS WITH CHANELS ALONG IT TO FIX THE EPC PANELS.

FOR WALLS EXTRUDED POLYSTYRENE CEMENT (EPC) SANDWICH PANLES CONSIDERED WHICH ARE EASY TO INSTALL AND BEING SANDWITCH PANELS THEY HAVE GOOD INSULATION PROPOERTIES. NO PLASTER OR TILE WORK REQUIRED AFTER INSTALLING THESE PANELS. EPC PANELS ARE GENERALLY 2' WIDE AVAILABLE IN MARKET, SO WHOLE PLAN IS WORKOUT ACCORDINGLY COSIDERING SIZE OF EPC PANEL.

CEMENT PERFORATED JALI USED FOR ASETHETICAL AS WELL VENTILATION PURPOSE; IT IS EASILY AVAILBLE ALL OVER INDIA.

DOORS CAN BE PVC OR ANYOTHER MATERIAL LOCALLY AVAILABLE

ROOF IS CONSIDERED IN PRECOATED SHEET, AS PER ORIENTATION SOUTH FACING SOLAR PANELS CAN BE USED WITH SOLAR LIGHTS IN THE TOILETS.

FLOORING CAN BE OF LOCAL AVAILABLE STONE. .